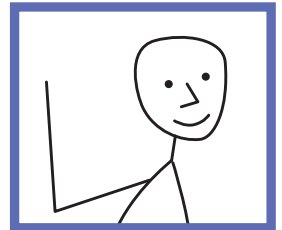


# Wandsworth Community Learning Disability Service for Adults



If you have a learning disability or are involved with someone who has a learning disability, we can help...



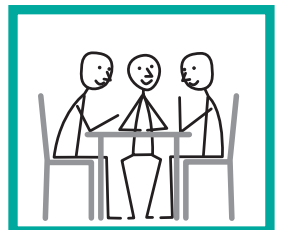
you



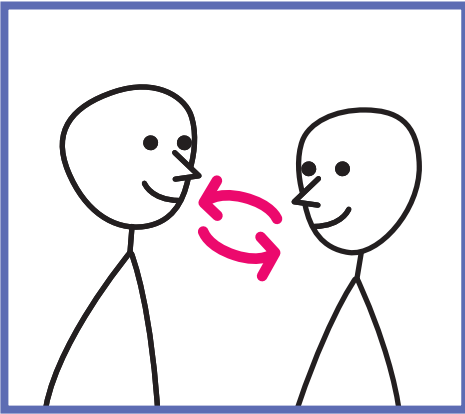
at home



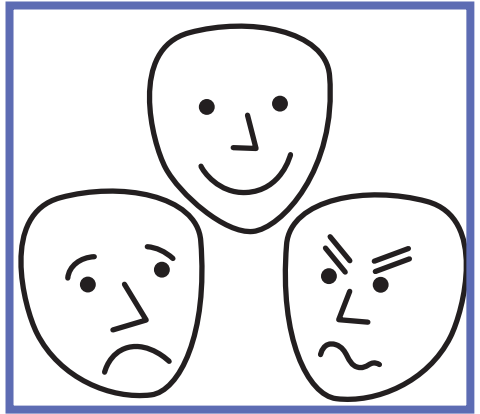
at work



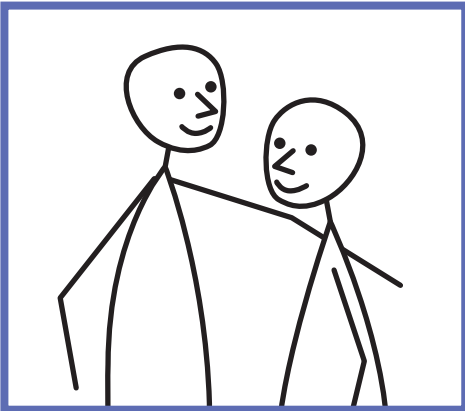
at leisure



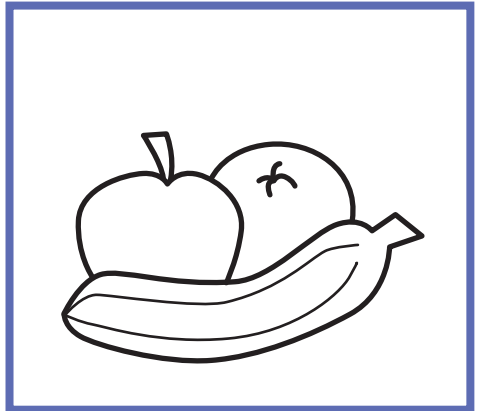
communication



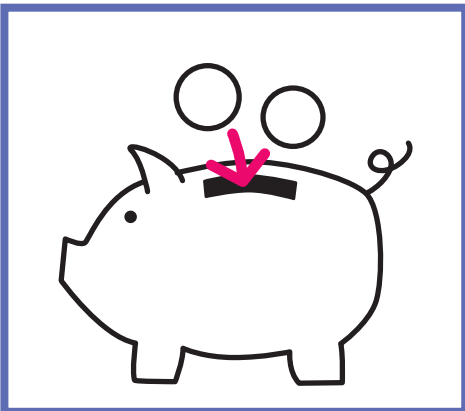
feelings



relationships



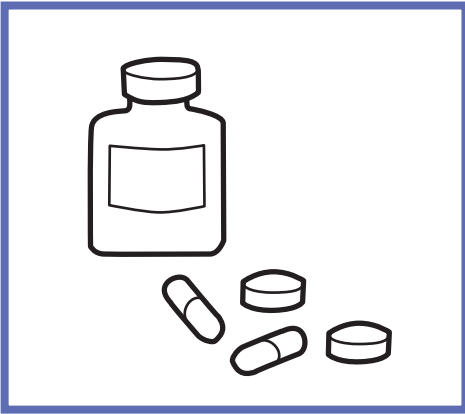
healthy eating



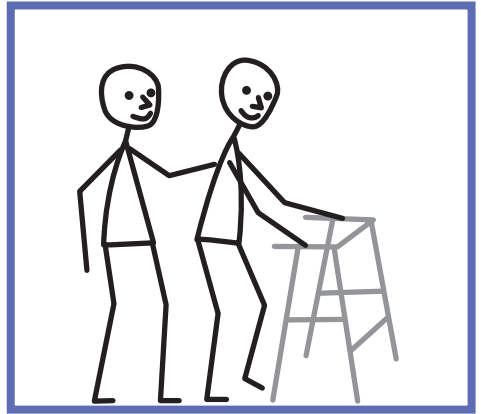
managing your money



direct payments



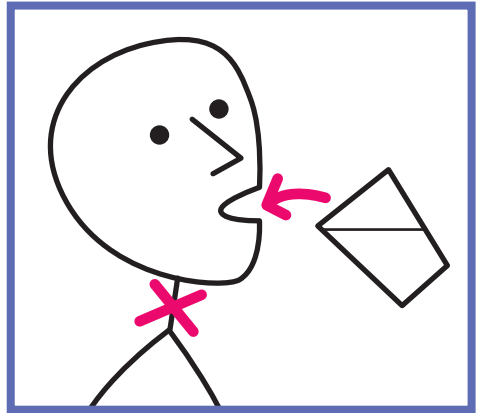
medication



mobility



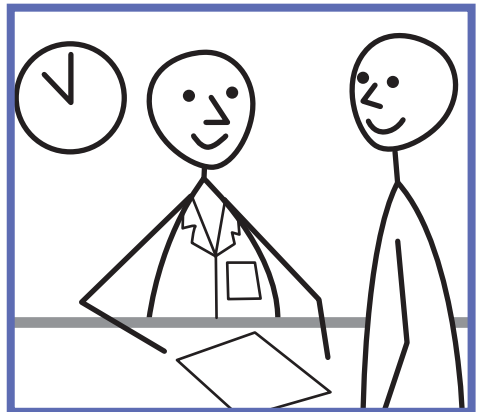
footwear



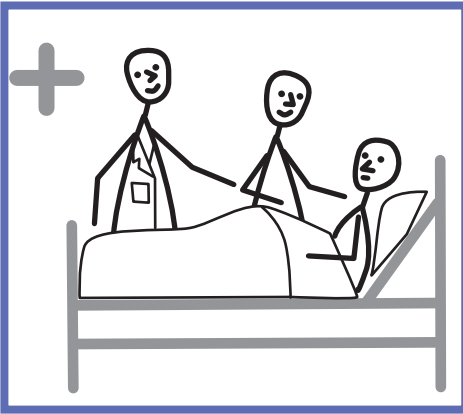
eating and drinking difficulties



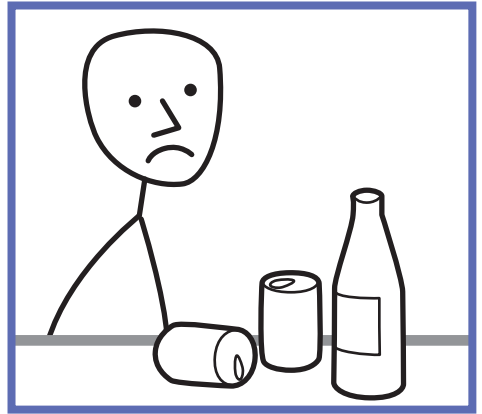
epilepsy clinic



attending appointments



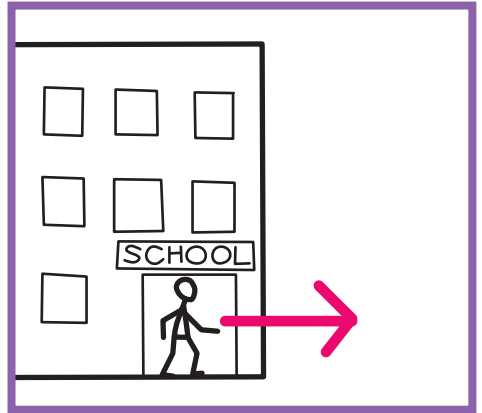
support in hospital



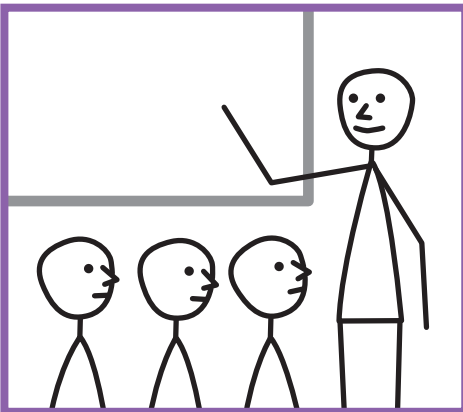
alcohol, substance abuse



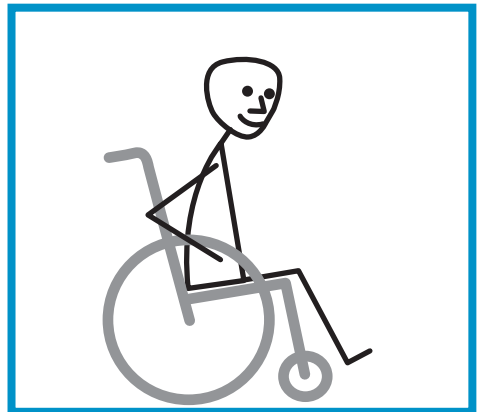
support with work



leaving school, what to do next



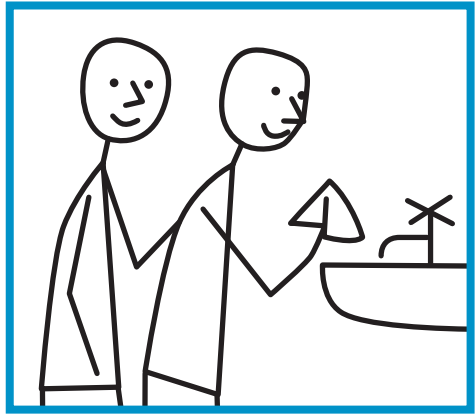
find a course, go to college



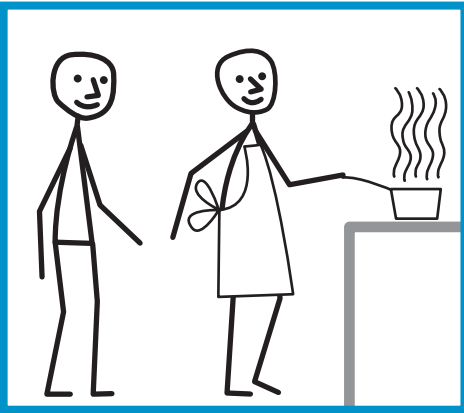
equipment



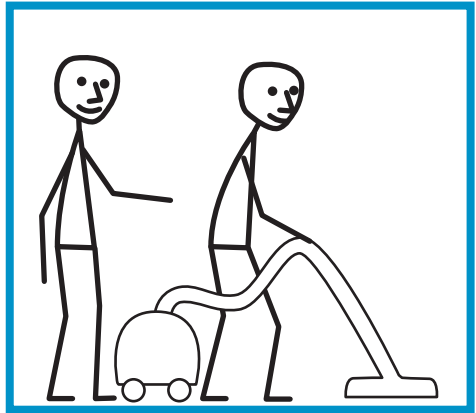
find you the right home...



...and support with hygiene



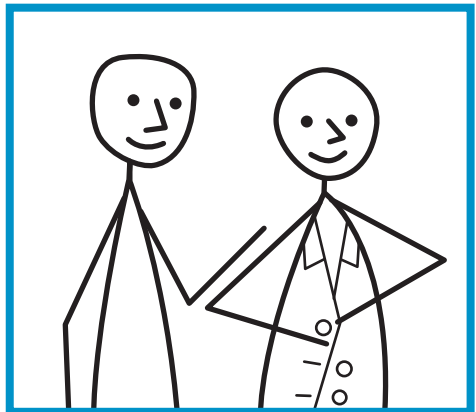
support with cooking



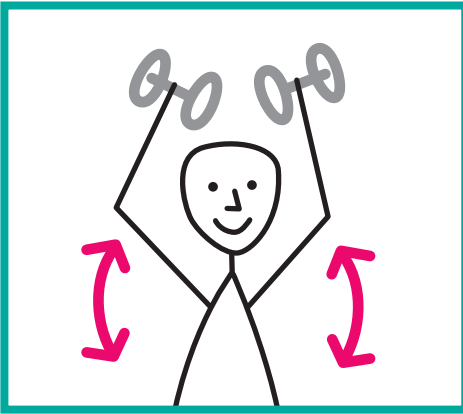
support with cleaning



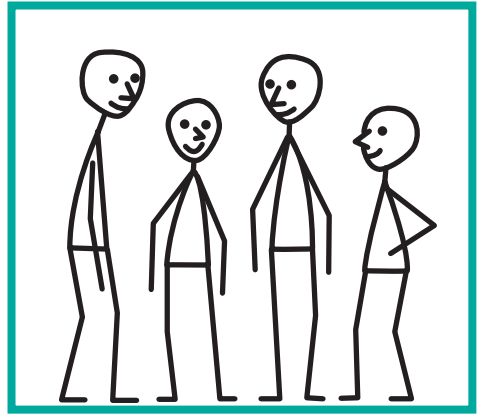
support with shopping



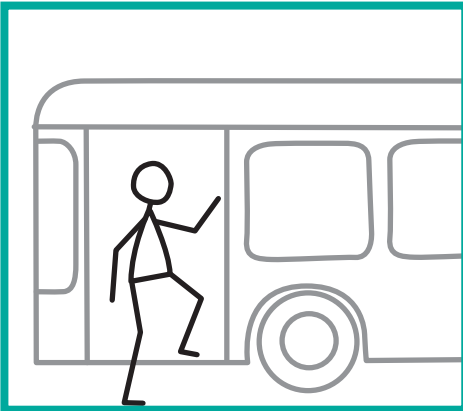
support with dressing



fitness



activities, clubs and day services



transport, travel



support and breaks for carers

The team consists of:

- Administrators
- Community nurses
- Dieticians
- Exercise practitioners
- Occupational therapists
- Physiotherapists
- Psychologists
- Psychiatrists
- Psychotherapists
- Social workers
- Speech and language therapists

## Getting to JBC

**If you are walking,** come through the gates on Burntwood Lane and walk up the road. Turn left just before you reach the G1 bus stop and follow the instructions below.



**If you come by G1 bus,** cross the road at the bus stop.

Walk along the path.



Turn left down the slope.



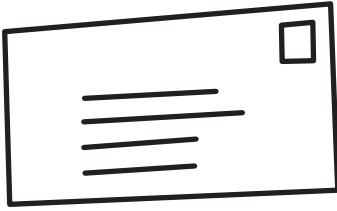
Walk along the path past the red building on the left.

Turn right at the end.

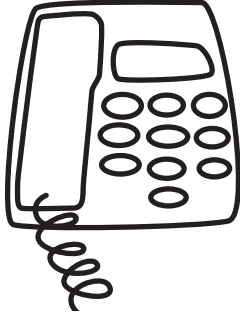


Go in to JBC through the doors under the sign.





Joan Bicknell Centre  
(Springfield Hospital Site)  
Burntwood Lane  
Tooting  
London SW17 7DJ



Telephone: 020 8700 0450  
Fax: 020 8700 0480



[www.wandsworthpct.nhs.uk](http://www.wandsworthpct.nhs.uk)  
[www.wandsworth.gov.uk](http://www.wandsworth.gov.uk)

To talk about your needs, phone: 020 8700 0487



9.30am to 2.00pm  
Monday to Friday



2.00pm to 5.00pm  
Monday to Friday  
*emergencies only*

Thank you to the members of the Speak Out Project for their helpful comments